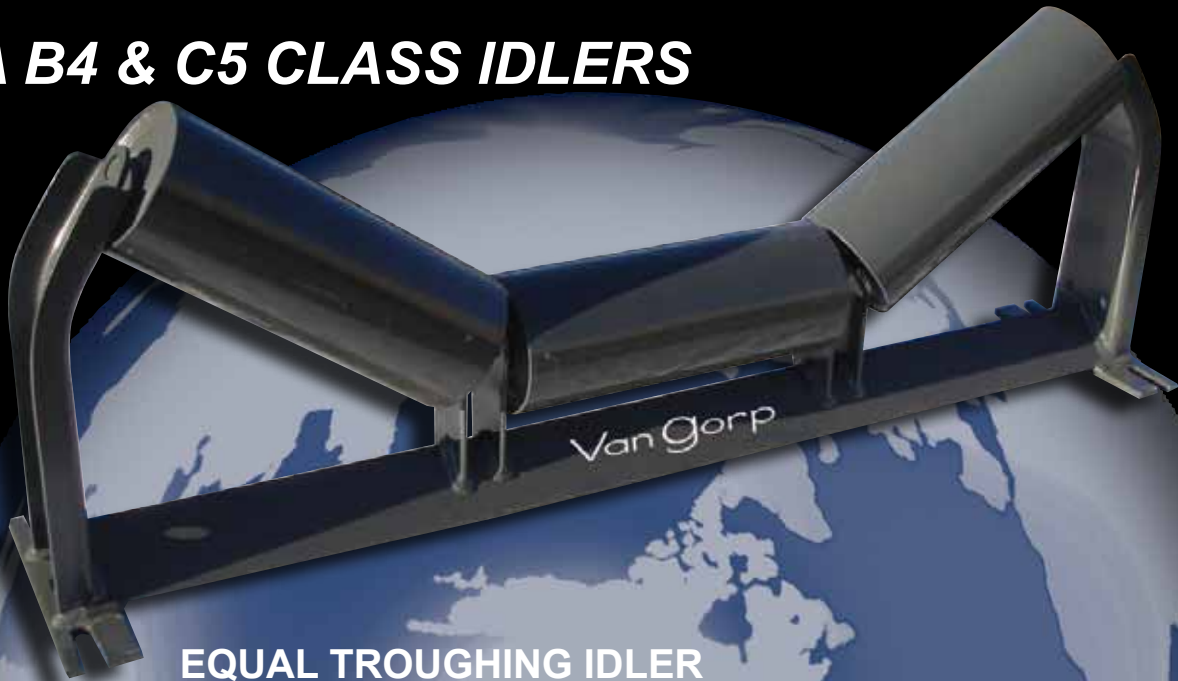
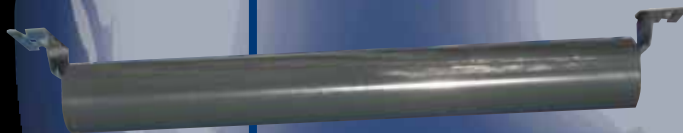


# Van Gorp

**CEMA B4 & C5 CLASS IDLERS**



**EQUAL TROUGHING IDLER**



**RETURN IDLER**



**TROUGHED IMPACT IDLER**

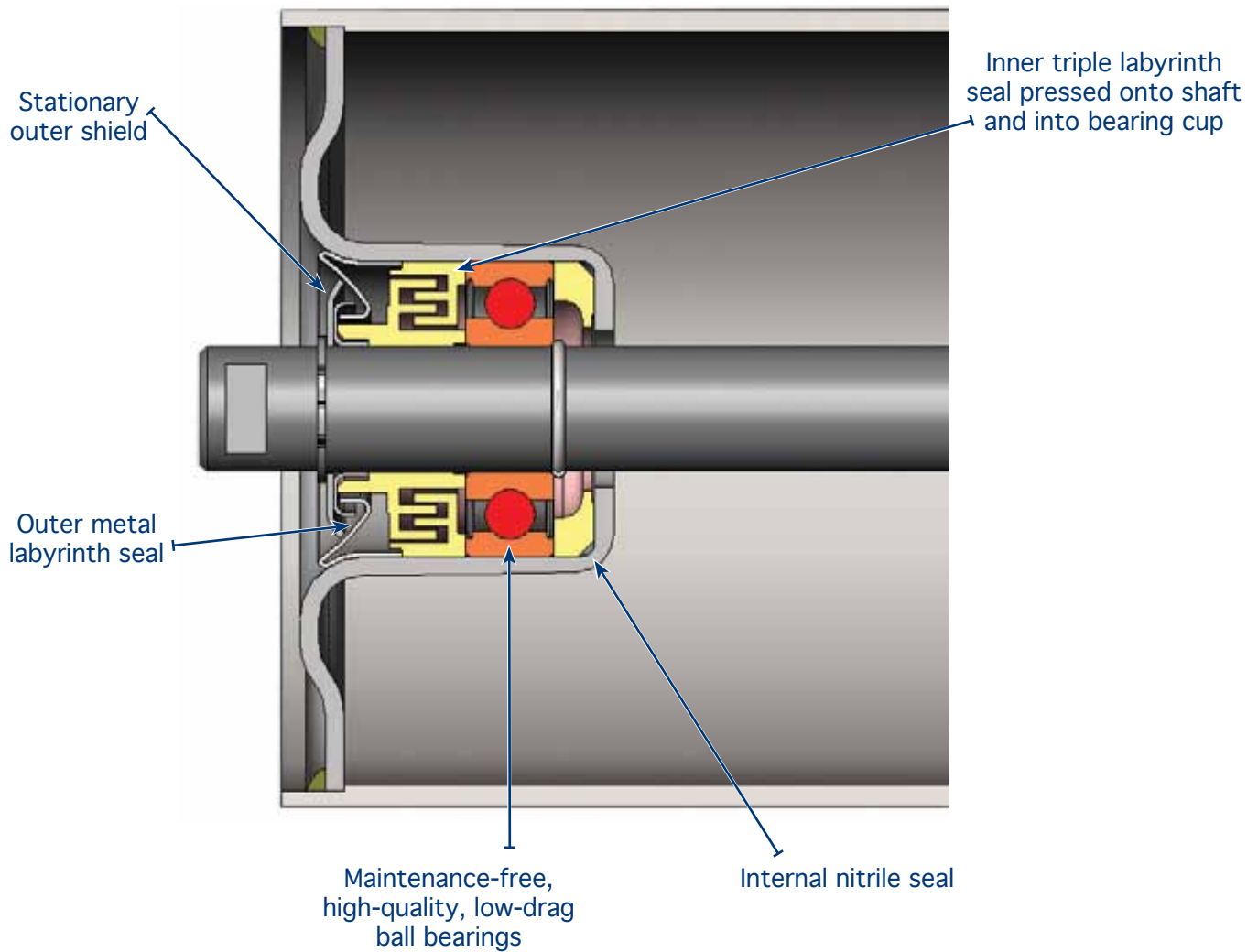


**FLAT CARRIER**

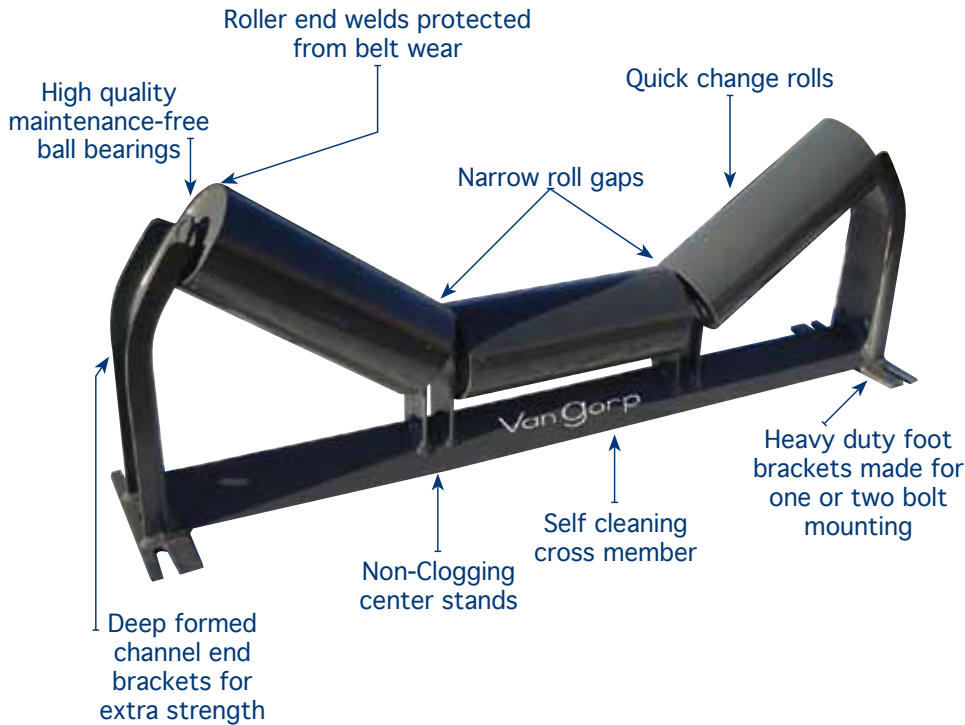
**World Class Quality**

Very low roll-drag with 25% energy savings.

## BEARING & SEAL ARRANGEMENT



Van Gorp Idlers conform to CEMA standards for dimensions and meet or exceed CEMA load ratings.



### EQUAL TROUGHING IDLER

Troughed belt idlers are available in roll inclinations of 20, 35 and 45 degrees.



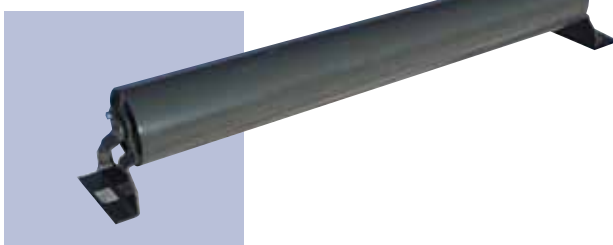
### RETURN IDLER

Carries empty belt on the return run.



### TROUGHED IMPACT IDLER

Troughed belt rubber cushion idlers protect the belt by absorbing impacts at loading and transfer points. They are available in inclinations of 20, 35 and 45 degrees.

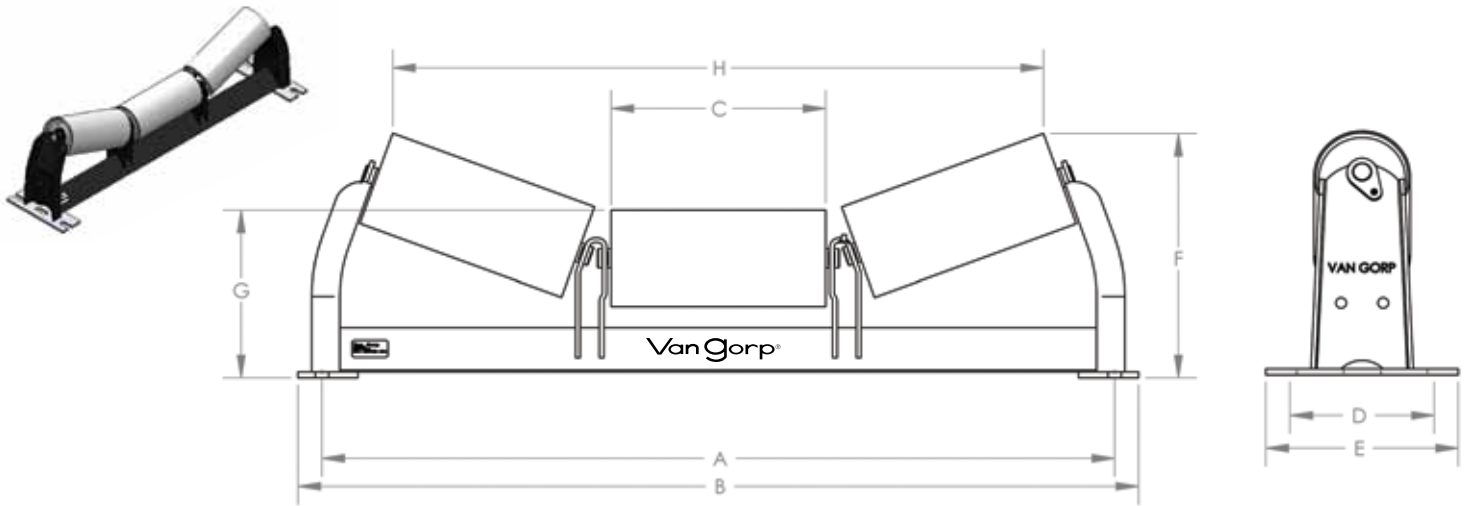


### FLAT CARRIER

Used for picking and sorting conveyors.

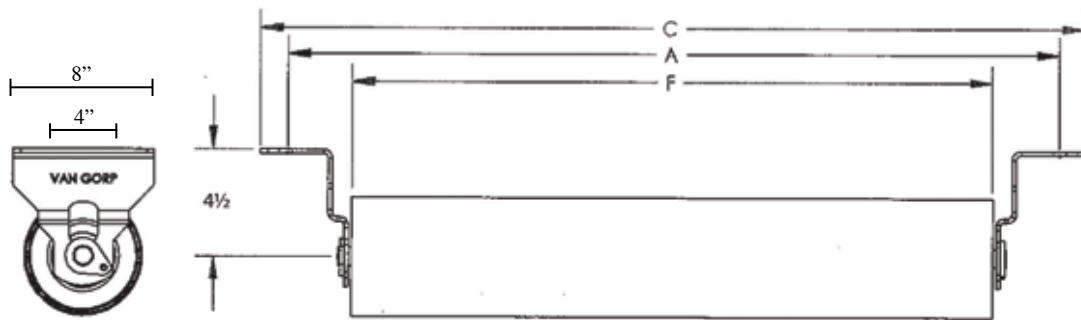
Also available in heavy duty live shaft design.

*Also The Finest and Most Complete Line of Conveyor Pulleys!*



## B4 Equal Troughing Idlers

Assembly Description	Belt Width	A	B	C	D	E	F	G	H	Assembly Weight
B4-20TE-18	18	27	29	6.75	5.5	8	9.42	7	20.69	31
B4-20TE-24	24	33	35	8.94	5.5	8	10.14	7	27.04	38
B4-20TE-30	30	39	41	11.13	5.5	8	10.88	7	33.33	42
B4-20TE-36	36	45	47	13.25	5.5	8	11.61	7	39.45	48
B4-35TE-18	18	27	29	6.75	5.5	8	11.11	7	18.94	35
B4-35TE-24	24	33	35	8.94	5.5	8	12.31	7	24.69	39
B4-35TE-30	30	39	41	11.13	5.5	8	13.56	7	30.50	45
B4-35TE-36	36	45	47	13.25	5.5	8	14.78	7	36.13	50



### B4 Return Idlers

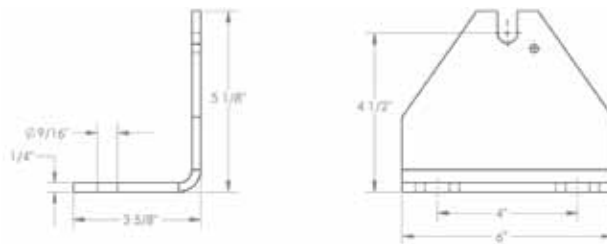
Assembly Description	Belt Width	A	C	F	Assembly Weight
B4-4R-18	18	27	29	21.38	15
B4-4R-24	24	33	35	27.38	18
B4-4R-30	30	39	41	33.38	20
B4-4R-36	36	45	47	39.38	23

Also available with 1.5" drop:

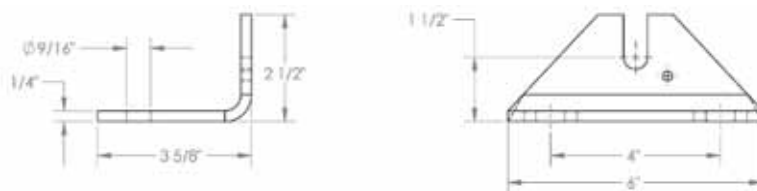
B4-1R-18	18	27	29	21.38	14
B4-1R-24	24	33	35	27.38	16
B4-1R-30	30	39	41	33.38	19
B4-1R-36	36	45	47	39.38	22

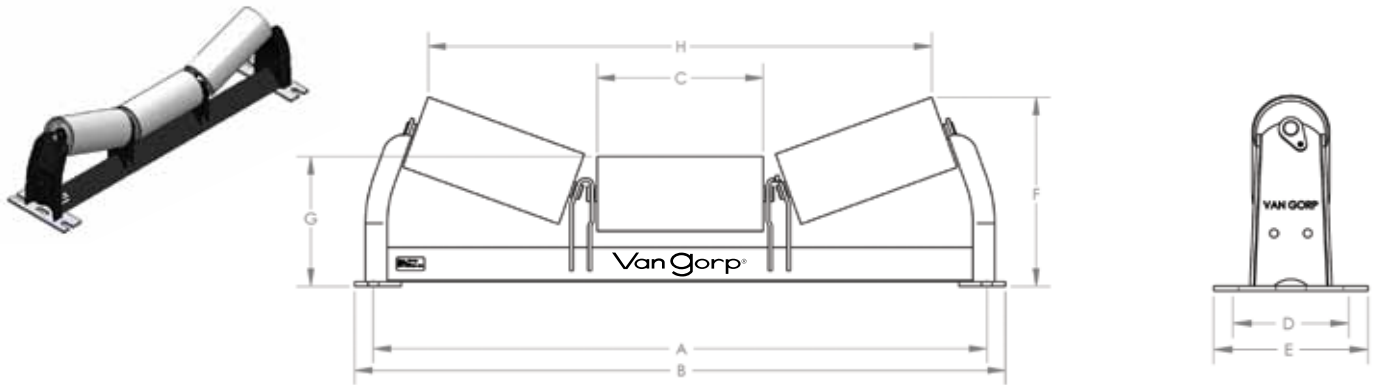
### End Stands for Flat Carrier Idlers

#### Standard End Stand



#### Optional End Stand



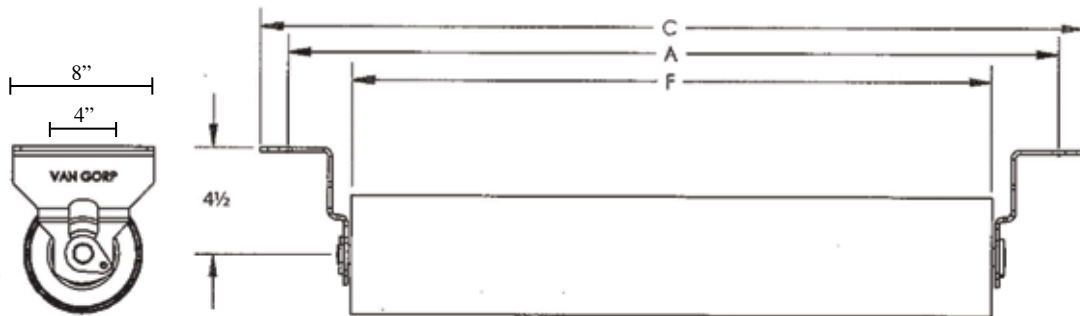


## C5 Equal Troughing Idlers

Assembly Description	Belt Width	A	B	C	D	E	F	G	H	Assembly Weight
C5-20TE-24	24	33	35	8.94	5.5	8	11.69	8.50	27.06	52
C5-20TE-30	30	39	41.5	11.13	5.5	9.5	12.56	8.63	13.38	59
C5-20TE-36	36	45	47.5	13.25	5.5	9.5	13.31	8.63	39.44	67
C5-20TE-42	42	51	53.5	15.44	5.5	9.5	14.44	9	45.75	75
C5-20TE-48	48	57	59.5	17.63	5.5	9.5	15.19	9	52.06	83
C5-35TE-24	24	33	35	8.94	5.5	8	13.81	8.50	24.56	53
C5-35TE-30	30	39	41.5	11.13	5.5	9.5	15.19	8.63	30.38	61
C5-35TE-36	36	45	47.5	13.25	5.5	9.5	16.38	8.63	35.94	69
C5-35TE-42	42	51	53.5	15.44	5.5	9.5	18.06	9	41.75	78
C5-35TE-48	48	57	59.5	17.63	5.5	9.5	19.31	9	47.50	86

## C5 Impact Troughing Idlers

Assembly Description	Belt Width	A	B	C	D	E	F	G	H	Assembly Weight
C5-20TEI-36	36	45	47.5	13.25	5.5	9.5	13.06	8.63	39.49	75
C5-20TEI-42	42	51	53.5	15.44	5.5	9.5	14.19	9	45.54	85
C5-20TEI-48	48	57	59.5	17.63	5.5	9.5	14.94	9	51.81	96
C5-35TEI-36	36	45	47.5	13.25	5.5	9.5	15.94	8.63	35.18	77
C5-35TEI-42	42	51	53.5	15.44	5.5	9.5	17.63	9	40.96	88
C5-35TEI-48	48	57	59.5	17.63	5.5	9.5	18.88	9	46.71	98



### C5 Return Idlers

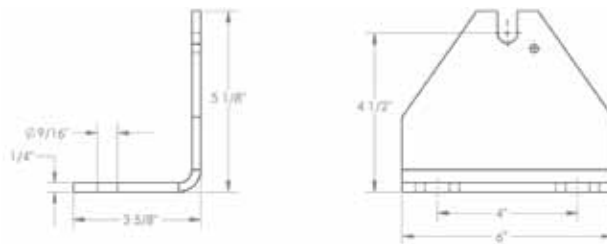
Assembly Description	Belt Width	A	C	F	Assembly Weight
C5-4R-24	24	33	35	27.38	26
C5-4R-30	30	39	41	33.38	30
C5-4R-36	36	45	47	39.38	35
C5-4R-42	42	51	53	45.38	39
C5-4R-48	48	57	59	51.38	43

Also available with 1.5" drop:

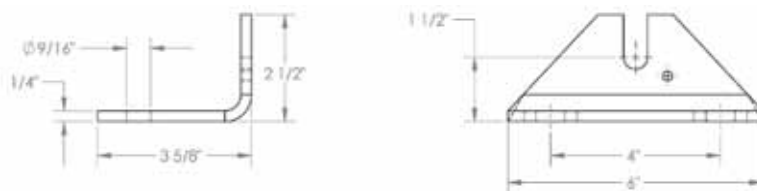
C5-1R-24	24	33	35	27.38	24
C5-1R-30	30	39	41	33.38	29
C5-1R-36	36	45	47	39.38	33
C5-1R-42	42	51	53	45.38	37
C5-1R-48	48	57	59	51.38	42

### End Stands for Flat Carrier Idlers

#### Standard End Stand



#### Optional End Stand



# Van Gorp

1410 Washington St  
PO Box 288  
Pella, IA 50219  
(641) 628-9212  
[www.vangorp.biz](http://www.vangorp.biz)

MEMBER:



**NSSGA**





# Van Gorp

**CEMA D6 & E7 CLASS IDLERS**



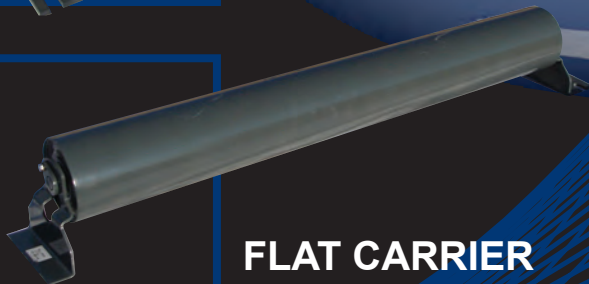
**EQUAL TROUGHING IDLER**



**RETURN IDLER**



**TROUGHED IMPACT IDLER**

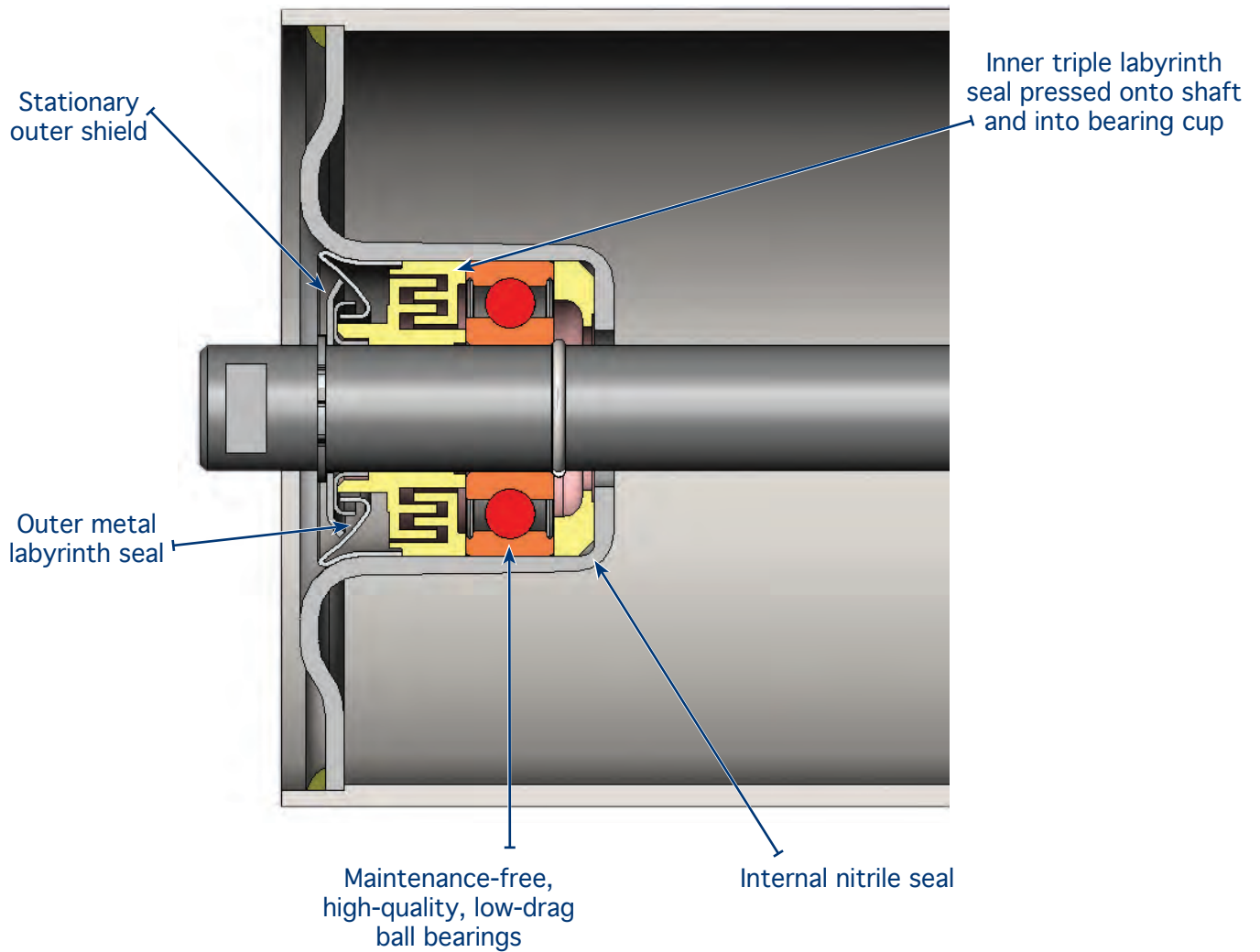


**FLAT CARRIER**

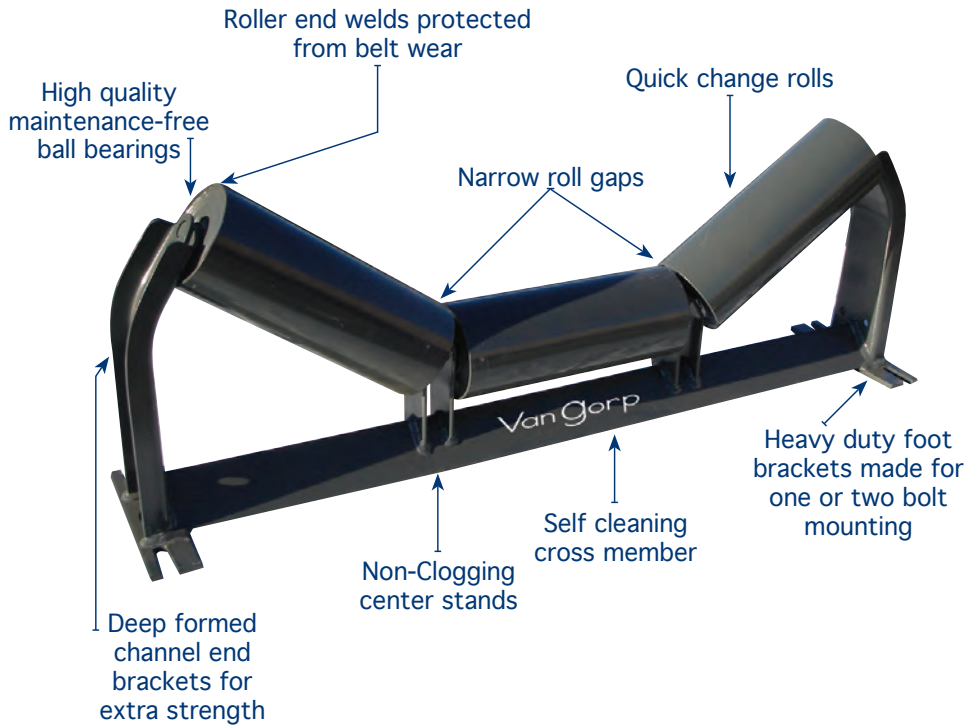
***World Class Quality***

Very low roll-drag with 25% energy savings.

## BEARING & SEAL ARRANGEMENT



Van Gorp Idlers conform to CEMA standards for dimensions and meet or exceed CEMA load ratings.



### EQUAL TROUGHING IDLER

Troughed belt idlers are available in roll inclinations of 20, 35 and 45 degrees.



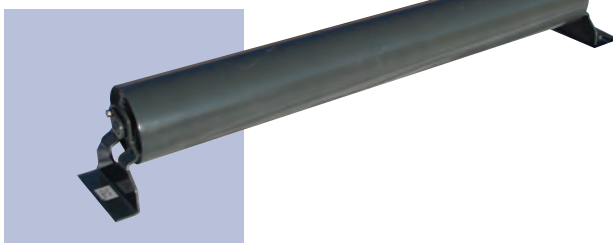
### RETURN IDLER

Carries empty belt on the return run.



### TROUGHED IMPACT IDLER

Troughed belt rubber cushion idlers protect the belt by absorbing impacts at loading and transfer points. They are available in inclinations of 20, 35 and 45 degrees.

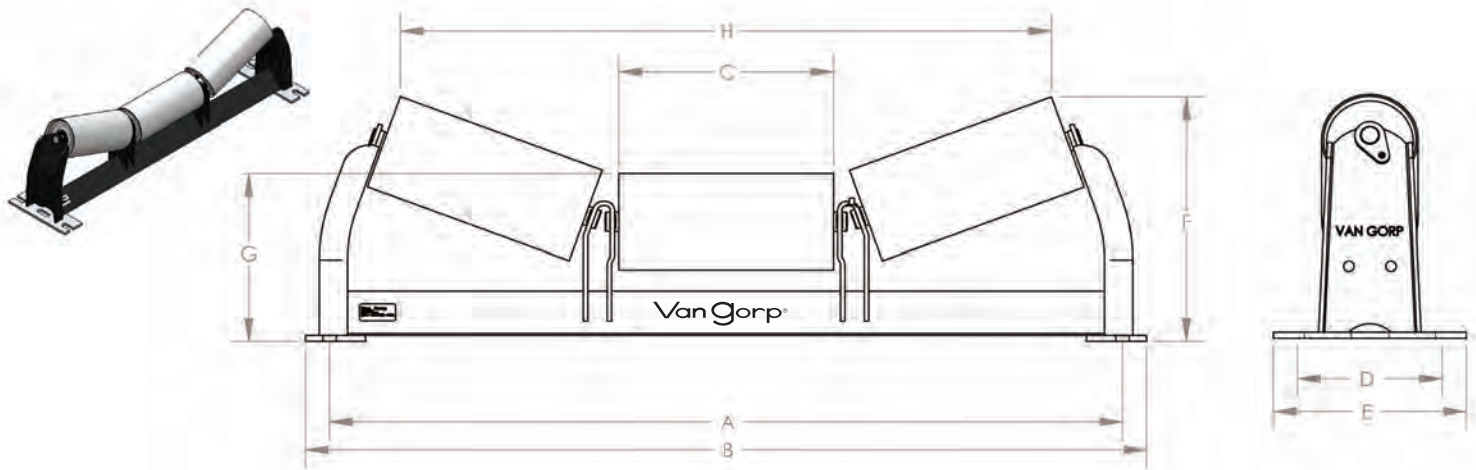


### FLAT CARRIER

Used for picking and sorting conveyors.

Also available in heavy duty live shaft design.

*Also The Finest and Most Complete Line of Conveyor Pulleys!*

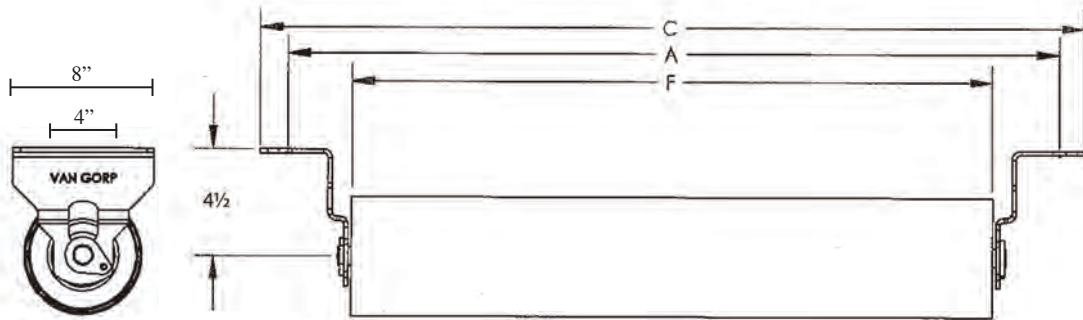


## D6 Equal Troughing Idlers

Assembly Description	Belt Width	A	B	C	D	E	F	G	H	Assembly Weight
D6-20TE-36	36	45	47.5	13.25	5.5	9.50	13.75	9.13	39.13	75
D6-20TE-42	42	51	53.5	15.44	5.5	9.50	14.88	9.50	45.44	93
D6-20TE-48	48	57	59.5	17.63	5.5	9.50	15.63	9.50	51.75	103
D6-20TE-54	54	63	65.5	19.75	8.5	10.94	16.75	10	57.81	118
D6-20TE-60	60	69	71.5	21.75	8.5	10.94	17.38	10	63.56	128
D6-35TE-36	36	45	47.5	13.25	5.5	9.50	16.81	9.13	35.44	76
D6-35TE-42	42	51	53.5	15.44	5.5	9.50	18.44	9.50	41.19	96
D6-35TE-48	48	57	59.5	17.63	5.5	9.50	19.69	9.50	46.94	106
D6-35TE-54	54	63	65.5	19.75	8.5	10.94	21.31	10	52.56	125
D6-35TE-60	60	69	71.5	21.75	8.5	10.94	22.44	10	57.88	134

## D6 Impact Troughing Idlers

Assembly Description	Belt Width	A	B	C	D	E	F	G	H	Assembly Weight
D6-20TEI-36	36	45	47.5	13.25	5.5	9.50	13.50	9.13	38.69	99
D6-20TEI-42	42	51	53.5	15.44	5.5	9.50	14.63	9.50	45	124
D6-20TEI-48	48	57	59.5	17.63	5.5	9.50	15.38	9.50	51.25	137
D6-20TEI-54	54	63	65.5	19.75	8.5	10.94	16.50	10	57.38	157
D6-20TEI-60	60	69	71.5	21.75	8.5	10.94	17.13	10	63.13	173
D6-35TEI-36	36	45	47.5	13.25	5.5	9.50	16.38	9.13	35	101
D6-35TEI-42	42	51	53.5	15.44	5.5	9.50	18	9.50	40.75	127
D6-35TEI-48	48	57	59.5	17.63	5.5	9.50	19.25	9.50	46.50	140
D6-35TEI-54	54	63	65.5	19.75	8.5	10.94	20.88	10	52.13	164
D6-35TEI-60	60	69	71.5	21.75	8.5	10.94	22	10	57.38	179



### D6 Return Idlers

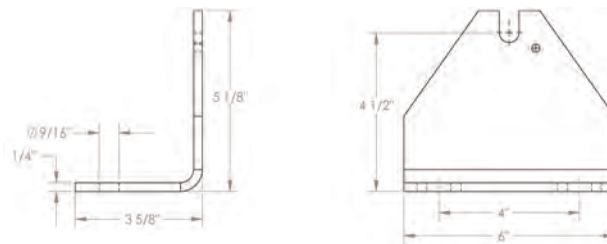
Assembly Description	Belt Width	A	C	F	Assembly Weight
D6-4R-36	36	45	47	39.38	46
D6-4R-42	42	51	53	45.38	52
D6-4R-48	48	57	59	51.38	58
D6-4R-54	54	63	65	57.38	64
D6-4R-60	60	69	71	63.38	70

Also available with 1.5" drop:

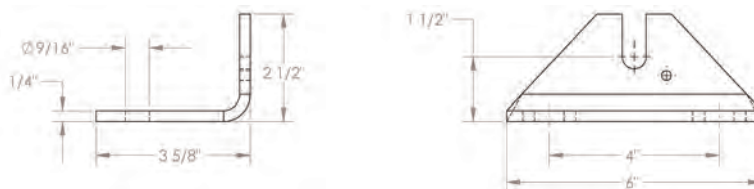
D6-1R-36	36	45	47	39.38	46
D6-1R-42	42	51	53	45.38	52
D6-1R-48	48	57	59	51.38	58
D6-1R-54	54	63	65	57.38	64
D6-1R-60	60	69	71	63.38	70

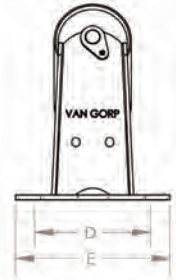
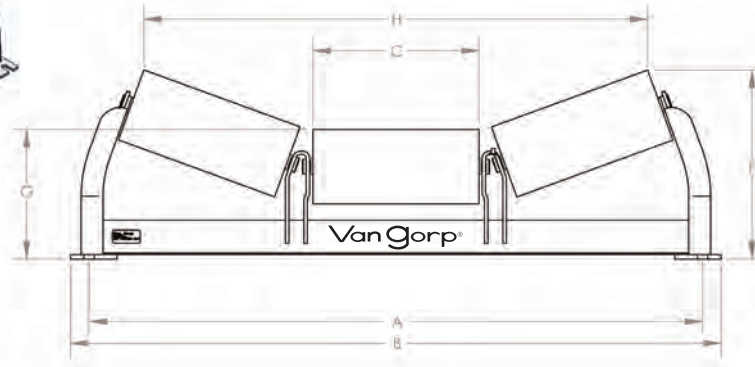
### End Stands for Flat Carrier Idlers

#### Standard End Stand



#### Optional End Stand



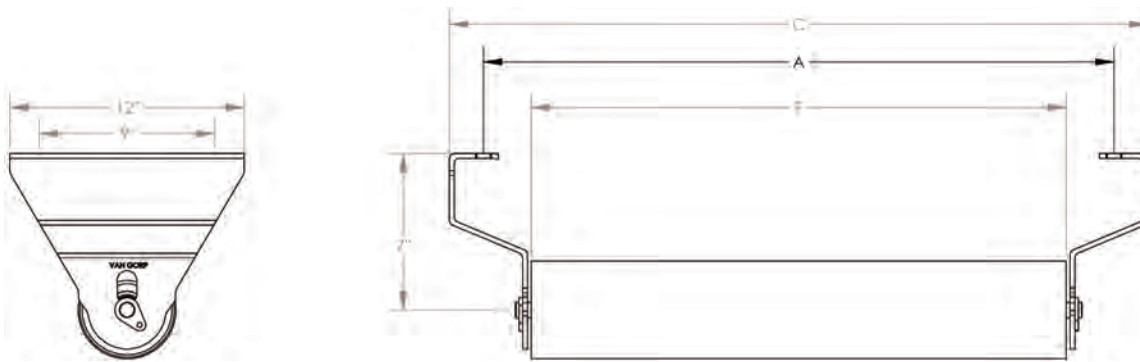


## E7 Equal Troughing Idlers

Assembly Description	Belt Width	A	B	C	D	E	F	G	H	Assembly Weight
E7-20TE-36	36	45	49	13	7.5	12	15.88	11.25	39.38	141
E7-20TE-42	42	51	54.75	15	7.5	12	16.56	11.25	45.13	154
E7-20TE-48	48	57	62.63	17.75	7.5	12	17.50	11.25	53.06	168
E7-20TE-54	54	63	68.38	19.75	7.5	12	18.19	11.25	58.88	186
E7-20TE-60	60	69	74.25	21.75	7.5	12	18.88	11.25	64.56	199
E7-20TE-66	66	75	79.88	23.75	7.5	12	20.25	12	70.31	237
E7-20TE-72	72	81	85.88	25.75	7.5	12	20.94	12	76.13	252
E7-35TE-36	36	45	49	13	7.5	12	18.75	11.25	34.75	142
E7-35TE-42	42	51	54.75	15	7.5	12	19.88	11.25	40.06	155
E7-35TE-48	48	57	62.63	17.75	7.5	12	21.50	11.25	47.31	173
E7-35TE-54	54	63	68.38	19.75	7.5	12	22.63	11.25	52.63	186
E7-35TE-60	60	69	74.25	21.75	7.5	12	23.75	11.25	57.88	199
E7-35TE-66	66	75	79.88	23.75	7.5	12	25.69	12	63.13	236
E7-35TE-72	72	81	85.88	25.75	7.5	12	26.81	12	68.44	251

## E7 Impact Troughing Idlers

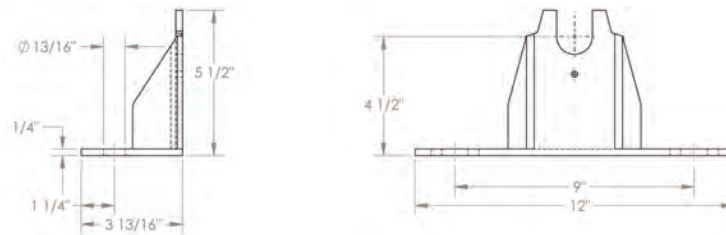
Assembly Description	Belt Width	A	B	C	D	E	F	G	H	Assembly Weight
E7-20TEI-36	36	45	49	13	7.5	12	15.88	11.25	39.38	186
E7-20TEI-42	42	51	54.75	15	7.5	12	16.56	11.25	45.13	209
E7-20TEI-48	48	57	62.63	17.75	7.5	12	17.50	11.25	53.06	242
E7-20TEI-54	54	63	68.38	19.75	7.5	12	18.19	11.25	58.88	266
E7-20TEI-60	60	69	74.25	21.75	7.5	12	18.88	11.25	64.56	286
E7-20TEI-66	66	75	79.88	23.75	7.5	12	20.25	12	70.31	333
E7-20TEI-72	72	81	85.88	25.75	7.5	12	20.94	12	76.13	385
E7-35TEI-36	36	45	49	13	7.5	12	18.75	11.25	34.75	190
E7-35TEI-42	42	51	54.75	15	7.5	12	19.88	11.25	40.06	214
E7-35TEI-48	48	57	62.63	17.75	7.5	12	21.50	11.25	47.31	247
E7-35TEI-54	54	63	68.38	19.75	7.5	12	22.63	11.25	52.63	271
E7-35TEI-60	60	69	74.25	21.75	7.5	12	23.75	11.25	57.88	292
E7-35TEI-66	66	75	79.88	23.75	7.5	12	25.69	12	63.13	339
E7-35TEI-72	72	81	85.88	25.75	7.5	12	26.81	12	68.44	391



### E7 Return Idlers

Assembly Description	Belt Width	A	C	F	Assembly Weight
E7-7R-36	36	45	48	40	82
E7-7R-42	42	51	54	46	92
E7-7R-48	48	57	60	52	101
E7-7R-54	54	63	66	58	110
E7-7R-60	60	69	72	64	118
E7-7R-66	66	75	78	70	127
E7-7R-72	72	81	84	76	136

### Standard End Stand for Flat Carrier Idlers



# Van Gorp

1410 Washington St  
PO Box 288  
Pella, IA 50219  
(641) 628-9212  
[www.vangorp.biz](http://www.vangorp.biz)

MEMBER:



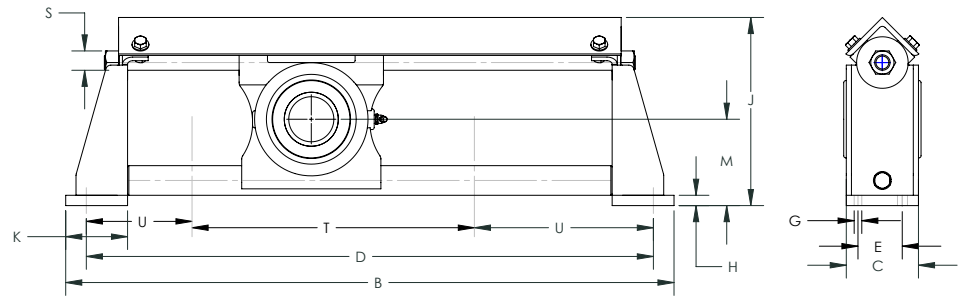
**NSSGA**





# Van Gorp®

The Take-Up Place



Top Angle Take-up Frame

Frame Size	Travel	Wt. lbs.	Part No.	Dimensions													
				B	C	D	E	F Bolt Dia	G	H	J	K	M	R	S	T	U
TA200	12	26	9047887	28 1/2	3 1/2	26 1/2	-	5/8	1	1/2	8 1/2	3	3 15/16	6 5/16	3/4	14	6 1/4
	18	31	9047895	34 1/2		32 1/2										20	
	24	34	9047903	40 1/2		38 1/2										26	
TA203	12	34	9047911	29 1/2	3 1/2	27 1/2	-	5/8	1	1/2	9 1/8	3	4 3/16	6 15/16	3/4	14 3/4	6 3/8
	18	40	9047929	35 1/2		33 1/2										20 3/4	
	24	45	9047937	41 1/2		39 1/2										26 3/4	
TA208	12	45	9047945	30 1/2	4	28 1/2	-	3/4	1 5/16	1/2	10	3 1/2	4 3/8	7 3/8	1	14	7 1/4
	18	52	9047952	36 1/2		34 1/2										20	
	24	59	9047960	42 1/2		40 1/2										26	
	30	67	9047978	48 1/2		46 1/2										32	
	36	73	9047986	54 1/2		52 1/2										38	
TA300	12	50	9047994	32 1/2	4 1/2	30 1/2	2	5/8	1	1/2	11	3 1/2	4 15/16	8 3/8	1	15	7 3/4
	18	56	9048000	38 1/2		36 1/2										21	
	24	63	9048018	44 1/2		42 1/2										27	
	30	70	9048026	50 1/2		48 1/2										33	
	36	76	9048034	56 1/2		54 1/2										39	
TA308	12	58	9048042	34 1/2	4 1/2	32	2	3/4	1	1/2	12 3/8	4	5 7/16	9 3/8	1 1/4	14 1/2	8 3/4
	18	65	9048059	40 1/2		38										20 1/2	
	24	73	9048067	46 1/2		44										26 1/2	
	30	79	9048075	52 1/2		50										32 1/2	
	36	87	9048083	58 1/2		56										38 1/2	
	42	95	9048091	64 1/2		62										44 1/2	
	48	102	9048109	70 1/2		68										50 1/2	
TA400	12	86	9048117	38 1/2	5 1/2	36	2 1/2	3/4	1	3/4	14 1/2	4 1/2	7	11 5/16	1 1/4	15 1/2	10 1/4
	18	94	9048125	44 1/2		42										21 1/2	
	24	102	9048133	50 1/2		48										27 1/2	
	30	111	9048141	56 1/2		54										33 1/2	
	36	119	9048158	62 1/2		60										39 1/2	
	42	127	9048166	68 1/2		66										45 1/2	
	48	135	9048174	74 1/2		72										51 1/2	

The Top angle protects the screw from dirt and damage (some place on front page)  
 Type of manufacturer's pillow block and number of mounting holes should be stated on purchase order.  
 For sizes of take-up frames not listed, contact Van Gorp Engineering Department.

World Class Quality



# Van Gorp®

*The Take-Up Place*

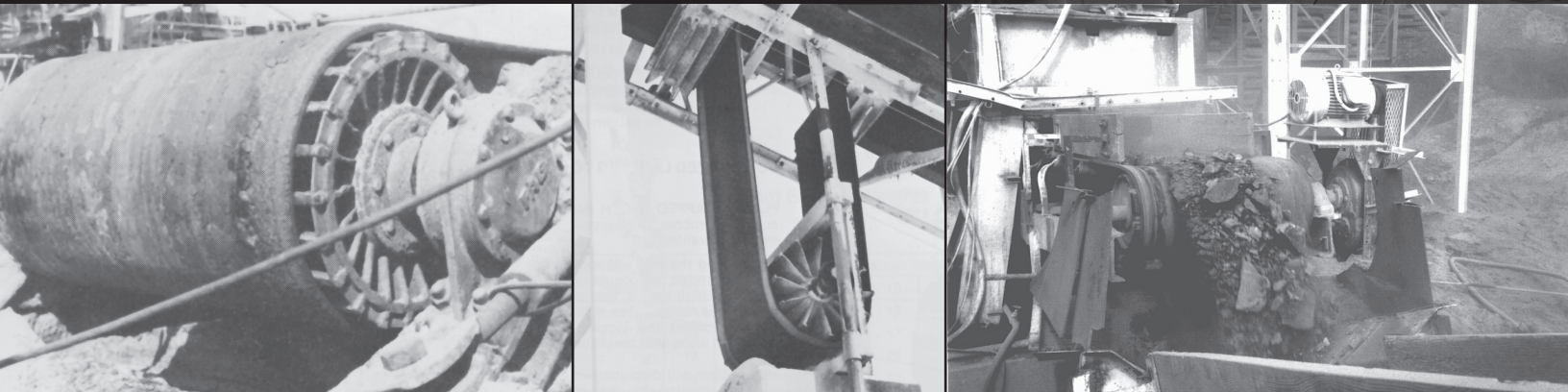
1410 Washington St  
PO Box 288  
Pella, IA 50219  
[www.vangorp.biz](http://www.vangorp.biz)

Take-UP Frame Interchange	
Van Gorp	Dodge
TA-200	TP-10
TA-203	TP-20
TA-208	TP-30
TA-300	TP-40
TA-308	TP-50
TA-400	TP-60

Frame Size	Typical Shaft Size	Bearing Bore Ranges
TA-200	1 15/16	1 3/4 - 2
TA-203	2 3/16	2 3/16
TA-208	2 7/16	2 1/4 - 2 1/2
TA-300	2 15/16	2 11/16 - 3
TA-308	3 7/16	3 3/16 - 3 1/2
TA-400	3 15/16	3 15/16 - 4

Van Gorp Top Angle frames are for use with Dodge top angle take-up bearings for types GLT,H,G,GXR GM,E,K, and TP S2000

**ISO Certified for World Class Quality**

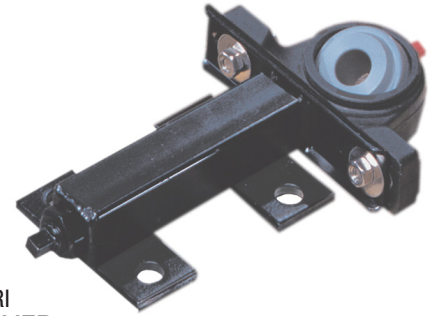
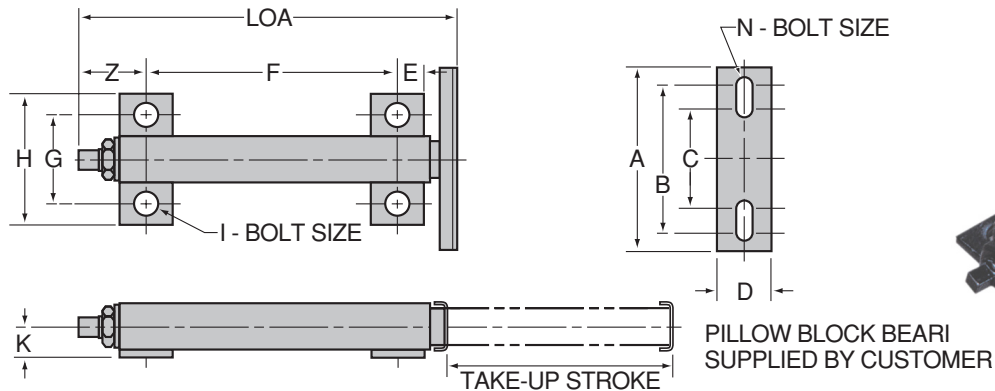


**Call 1-800 VAN GORP for all of your conveyor pulley and take-up frame needs!**

Distributed by:

# Van Gorp®

The Take-Up Place



## Telescoping Take-up Frame

HOW TO SPECIFY AND ORDER						STANDARD TAKE-UP DIMENSIONS (INCHES)																	
BEARING BORE RANGE	TUBE SERIES	TAKE UP STROKE	MATERIAL	MTG. FEET	BEARING PLATE	LOA	K	BEARING PLATE DIMENSIONS					FOOT DIMENSIONS					SQ. TUBE SIZE		ADJUSTER			
								A	B	C	D	N BOLT	E	F	G	H	I BOLT	Z	SLIDER	BODY	SQ DRIVE	THD. UNC.	
1/2" TO 1"	100	3	MS	SF	BP	6.88	0.88	5.25	4.31	2.94	1.50	3/8	0.75	3.56	2.63	3.69	1/2	1.84	1.00	1.25	WELD NUT 15/16 HEX	.625-11	
		6				10.38								7.06									11.06
		9				14.38								11.06									11.06
3/4" TO 1 3/4"	250	3	MS	SF	BP	8.50	1.13	7.00	5.69	3.81	2.04	1/2	1.00	4.38	3.00	4.00	1/2	2.25	1.50	1.75	WELD NUT 1 1/8 HEX	.75-10	
		6				11.50								7.38									10.38
		9				14.50								10.38									13.38
1 3/4" TO 2 15/16"	300	6	MS	SF	BP	11.13	1.50	10.00	8.69	5.56	2.84	5/8	1.25	6.12	4.00	5.25	5/8	2.63	2.25	2.50	WELD NUT 1 5/16 HEX	.875-9	
		9				15.13								10.12									14.12
		12				19.13								14.12									21.12
1 3/4" TO 2 15/16"	350 HD	9	MS	SF	BP	19.00	1.75	10.00	8.69	5.56	3.00	5/8	1.25	13.00	4.50	5.75	5/8	3.50	2.50	3.00	WELD NUT 1 7/16 HEX	.875-6 ACME	
		12				22.00								16.00									22.00
		18				28.00								22.00									28.00
2 7/16" TO 3 1/2"	400	12	MS	SF	BP	27.75	2.13	14.00	11.75	8.50	3.50	3/4	1.75	20.00	5.50	7.50	3/4	4.25	3.00	3.50	WELD NUT 2 HEX	1.25-5 ACME	
		18				33.75								26.00									32.00
		24				39.75								32.00									32.00

Easy 4-bolt assembly to channel bed

Uses standard 2-bolt pillow block bearing on pillow block bearings

Sturdy, simple modular design for troublefree operation

Threaded internal adjuster rod is totally enclosed and protected against product buildup, rust, corrosion, or thread damage.

**CALL 1-800-VAN-GORP (826-4677) for all of your Take-Up needs! Or email [vangorp@vangorp.biz](mailto:vangorp@vangorp.biz)**

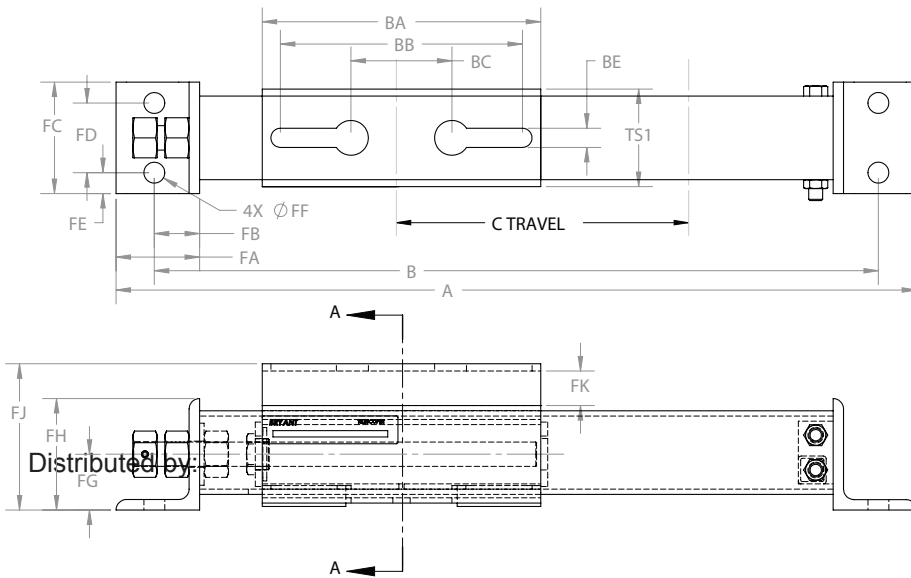
World Class Quality



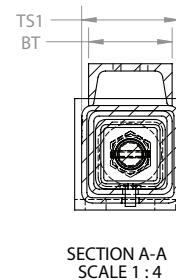
Top Mount Take-up Frame

UNIT DIMENSIONS:				TUBE SIZES			ADJUSTER ROD SIZES
MODEL	TAKE UP STROKE	A	B	BT	TS1	TS2	
350TM	9	28.75	26.00	3.00	3.50	2.50	.875-6 ACME
	12	31.75	29.00				
	18	37.75	35.00				
	24	43.75	41.00				
	30	49.75	47.00				
	36	55.75	53.00				
400TM	9	34.25	31.50	3.50	4.00	2.75	1.250-5 ACME
	12	37.25	34.50				
	18	43.25	40.50				
	24	49.25	46.50				
	30	55.25	52.50				
	36	61.25	58.50				
500TM	9	51.75	46.75	6.00	7.00	5.00	2.250-4 ACME
	12	54.75	49.75				
	18	60.75	55.75				
	24	66.75	61.75				
	30	72.75	67.75				
	36	78.75	73.75				

MOUNTING DIMENSIONS										
MODEL	FA	FB	FC	FD	FE	FF	FG	FH	FJ	FK
350TM	3.00	1.63	4.00	2.50	0.75	0.75	2.00	4.00	5.25	1.24
400TM	3.50	2.13	5.00	3.00	1.00	0.88	2.82	5.00	6.50	1.36
500TM	6.00	3.50	7.50	5.00	1.25	0.88	4.25	8.00	9.93	1.76



BEARING PLATE DIMENSIONS				
BA	BB	BC	BD	BE
10.00	8.69	5.56	0.69	1.75
14.00	11.75	8.50	1.00	2.00
22.00	per customer specifications			



**WARRANTY**

Two year no freeze-up  
guarantee standard  
-or-  
Five year no freeze-up  
guarantee with addition  
of grease fitting

*ISO Certified for World Class Quality*

**Call 1-800-VAN-GORP for all of your conveyor pulley and take-up frame needs!**

1410 Washington St  
PO Box 288  
Pella, IA 50219  
[www.vangorp.biz](http://www.vangorp.biz)