



# INVISIBLE FLEXIBLE SPLICE

**Quick and easy setup**

**The new invisible splice for light duty belts**



**MLT**  
**A Partner you  
can Trust**

Our products and solutions  
meet your needs

70 years of experience and  
Innovation for you



**SOLUTIONS FOR HEAVY  
AND LIGHT-DUTY BELTS, MANUFACTURER OF  
TECHNICAL BELTS, TOOLS, VULCANIZING PRESSES**

## SUMMARY

04

IFS, what is it?.....p04

05

Performances.....p05

06

A new range of flexible splices.....p06

07

Choose your IFS .....p07

08

Installation method.....p08

# IFS<sup>®</sup>, what is it?

## The flexible splice for light duty PVC / PU belt

### A solution of flexible splice for light duty belts!

IFS (Invisible Flexible Splice) is an innovative and fast solution for splicing your light duty belts.

The IFS is the new splicing system for light duty belts, heir to the PVC / PU splice.

It has been developed by the MLT team to offer a solution to your daily problems.

MLT: always at the forefront of innovation and consistently improving our products inspired by your experienced feedback.

### Your problems

- Machine downtime too long
- A lack of tightness in your splices can cause the quality to decline
- bacterial risk
- Complexity of installation of your current lacing system
- Dismantling the conveyor for belt replacement
- Complexity to clean conveyor

### Our solution

Thanks to a new design and a new manufacturing process developed by our R&D teams, the new IFS is as effective as the previous version:

- Resistant in difficult conditions
- More watertight and flatter, thanks to its thickness, the IFS offers better safety
- More flexible
- Even easier to install, with the introduction of the pins

The new IFS splice has been improved to meet the majority of situations and constraints. With no metal components, it provides optimal sanitary conditions and easy cleaning. It can also be used with metal detectors and X-ray equipment.

With the IFS being removable, it provides you with one major advantage: the belt can be replacement without needing to disassemble the conveyor belt.

### Advantages:

- Waterproof
- Flexible
- Resistant even in severe conditions
- Integrates perfectly into the belt
- Manufactured and installed without metal components
- Easily removable

### Fields of application:

- Light duty industries
- Agricultural/ food industries
- Laundries
- Industries utilizing cardboard, cartons, boards etc.
- And more!

### New generation pins:



The length of the pins can be adjusted with a simple pliers.

### Easy installation

For the endless setting of your belt, simply insert the specially designed pins. The pins ease of installation provides fast assembly and disassembly of your conveyor belt.

An essential system to maintain your facilities by reducing downtime.

# Performances :

The new IFS tested in extreme situations

## Tested in severe conditions :



### As resistant as the previous version

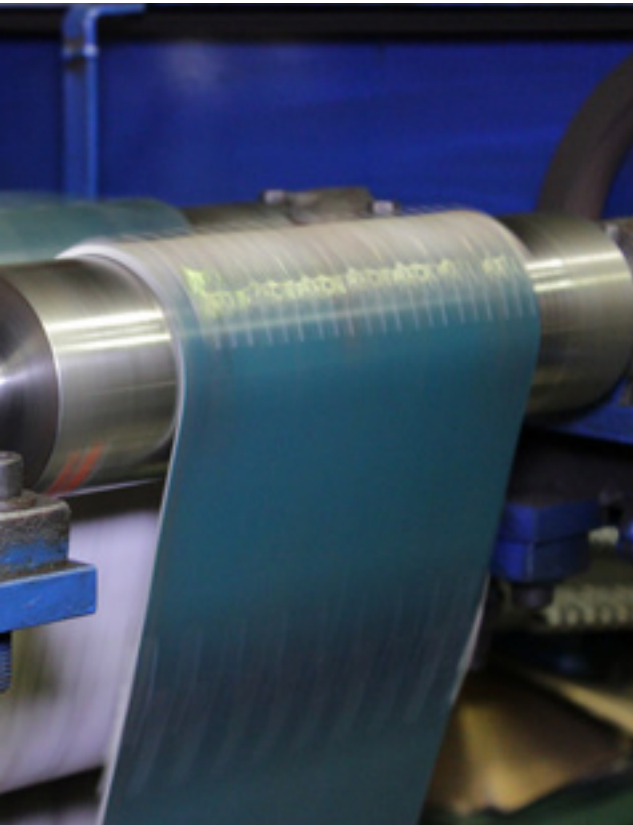
Tested in extreme conditions for 1000 hours, 24/24, 7/7, on a fast running conveyor (180 m / min), the result was a high-strength mechanical splice. This occurred even at temperatures up to 85 ° C.

## A new design created to meet all your needs:

### But without extra thickness



*The perfect thickness of the new IFS in the belt gives it an incredible level of integration.*



# A new range of flexible splices

## A simple choice for all of your needs

For this new generation of flexible splices, we have simplified the range for more efficiency and ease of ordering the product. **No longer are there dozens of product designations, the new IFS is broken down into only 4 levels of thickness, covering the majority of belts and most applications!**  
The IFS splice is 1170 mm (46") in length when delivered

## Choose your IFS efficiently and easily:

Belt thickness (mm)	Tension	
	N/mm	PIW
1,5 to 2,4 mm (1/16" to 3/32")	8	46
2,5 to 3,4 mm (3/32" to 9/64")	12	69
3,5 to 4,9 mm (9/64" to 13/64")	20	114
5 to 6 mm (13/64" to 15/64")	20	114

## Choose your IFS in the product range below:

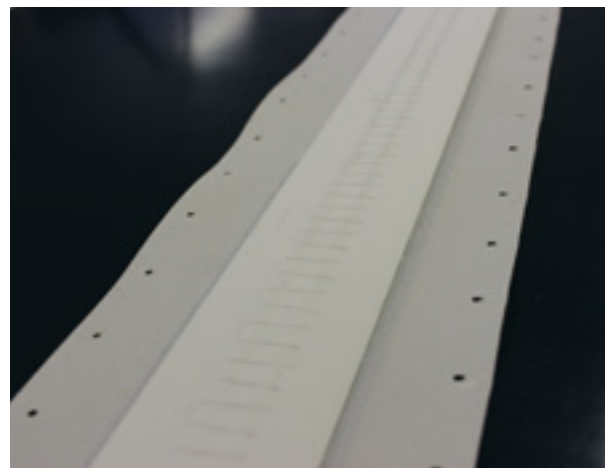
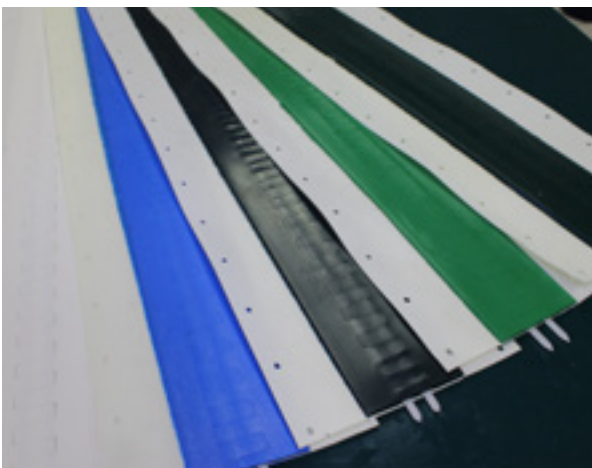
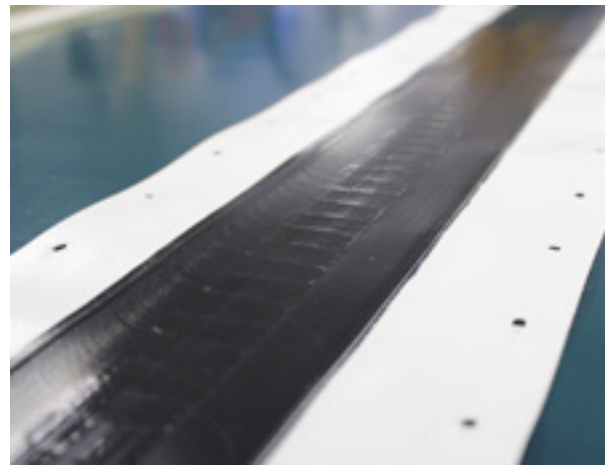
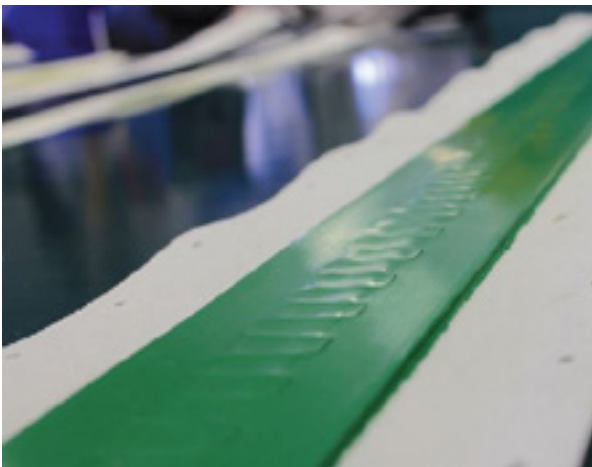
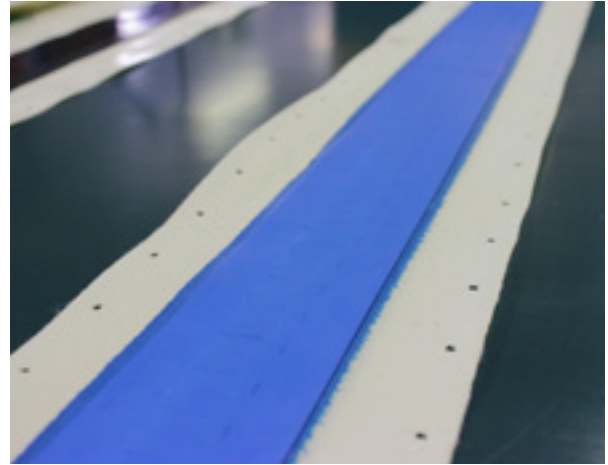
PVC		Minimum pulley Ø		Colors					
Belt thickness	Sliding bed	mm	Inch	Ocean blue RAL 5020	Brilliant blue FDA RAL 5007	Graphite black RAL 9011	Emerald green RAL 6001	Fir green RAL 6009	Traffic white FDA RAL 9016
1.5 to 2.4 mm (1/16" to 3/32")	Without	60	2 <sup>23/64</sup>	2910519	2910516	2910513	2910504	2910511	2910509
	With			2910535	2910534	2910536	2910538	2910537	2910533
2.5 to 3.4 mm (3/32" to 9/64")	Without	100	3 <sup>15/16</sup>	2910542	2910541	2910543	2910545	2910544	2910540
	With			2910548	2910547	2910549	2910551	2910550	2910546
3.5 to 4.9 mm (9/64" to 13/64")	Without	120	4 <sup>23/32</sup>	2910554	2910553	2910555	2910556		2910565
	With			2910559	2910558	2910560	2910562	2910561	2910557
5 to 6 mm (13/64" to 15/64")	Without	120	4 <sup>23/32</sup>	2910564	2910518				2910563
	With			2910520		2910514	2910503	2910512	2910510

PU		Minimum pulley Ø		Colors		
Belt thickness	Sliding bed	mm	Inch	Sky blue RAL 5015	Signal white RAL 9003	Ocean blue RAL 5020
1.5 to 2.4 mm (1/16" to 3/32")	Without	60	2 <sup>23/64</sup>	2910515	2910521	2910525
	With			2910524	2910523	2910522
2.5 to 3.4 mm (3/32" to 9/64")	Without	100	3 <sup>15/16</sup>	2910528	2910527	
	With				2910529	2910530
3.5 to 4.9 mm (9/64" to 13/64")	Without	120	4 <sup>23/32</sup>		2910517	
	With				2910531	2910532

Sliding bed top/bottom		Minimum pulley Ø		Colors	
Belt thickness		mm	Inch	Traffic white FDA RAL 9016	Signal white RAL 9003
PVC	1,5 à 2,4 mm (1/16" à 3/32")	60	2 <sup>23/64</sup>	2910539	
	2,5 à 3,4 mm (3/32" à 9/64")	100	3 <sup>15/16</sup>	2910552	
PU	1,5 à 2,4 mm (1/16" à 3/32")	60	2 <sup>23/32</sup>		2910526

# Choose Your IFS

---

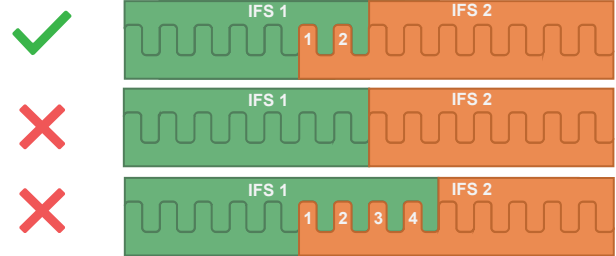


## Here's how MLT recommends you install the IFS successfully

### For an optimal installation of our IFS, we recommend:

- A thermofusion temperature for IFS PU Light blue = 150°C
- A thermofusion temperature for other IFS = 170°C
- One pressure for all IFS = 2 bars or 30 PSI.

If you require more than one IFS across the width of your belt, e.g. 1500mm wide ; Place your IFS in staggered arrangement Be careful not to overlap more than two fingers. Based on the first diagram



### Splice choice :



1| Check the thickness of the belt and choose the correct splice.

### Belt preparation:



2| Open the belt at the thickest point for at least 50mm depth (if possible between 2 frames).

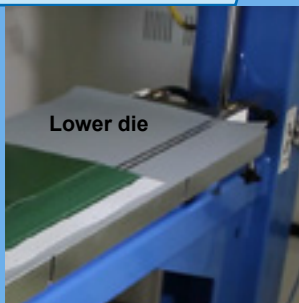
### Splice preparation:



3| Remove the acetal pin and insert the stainless steel pin. After the heating process, replace the stainless steel pins with the acetal pins.

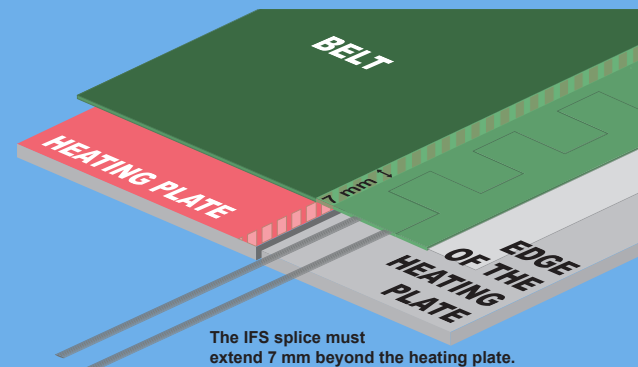
**⚠ First remove a stainless steel pin and insert an acetal pin**

### Press work:



4| On the heating press that is equipped with the lower die, place the pin in the belt (Be sure to overlap it by no more than 1mm).

The splice must be supported on the heating plate for 7 mm. Place the supporting part of the splice and the belt on the same side. Tags labeled « TOP » are affixed to the carrying side of the IFS splice.



The IFS splice must extend 7 mm beyond the heating plate.

Overlap the IFS with the strip of 1 mm maximum.



It is possible to insert the ends of the IFS with a Soldering iron to hold the belt and the splice.





5| Wedge the edges of the splice and belt with a piece of belt.



6| Cover with the upper die and a stiff plate. Close the press.



8| Set the parameters heating and cooling according to the requirements of the belt.

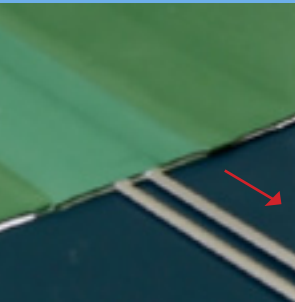
Consult technical documentation of the supplier.

The IFS junction itself should not be heated when thermofusing the IFS with the belt.

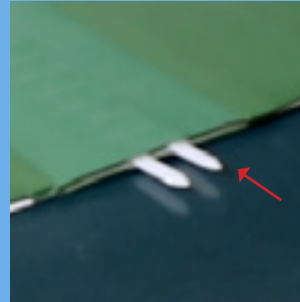


9| At the conclusion of the heating cycle, repeat on the other end.

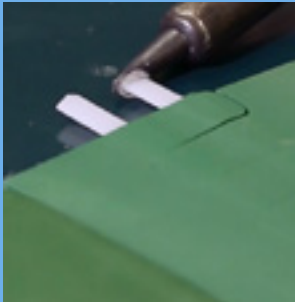
**⚠ MLT proscribes the vulcanization of the splice in 1 splice.**



10| Remove the stainless steel pins (optional: cut the edges of the splice).



11| Replace the acetal or stainless steel pins as required.



12| Round off the ends.

WATCH THE TUTORIAL VIDEO  
ON OUR COMPANY'S  
 **YouTube**  
PAGE



**INVISIBLE  
FLEXIBLE SPLICE**

**Your IFS splice is  
installed**

# Stay tuned !

**To follow all MLT news,  
don't forget to subscribe to our social media networks!**



Like

@mltlacing



@minetlacing

Access to  
all of the  
MLT product  
installation tutorials  
in one click!



+ Follow

MLT  
Minet  
Lacing Tech-  
nology



Follow

@mltlacing



Follow

@mltlacing

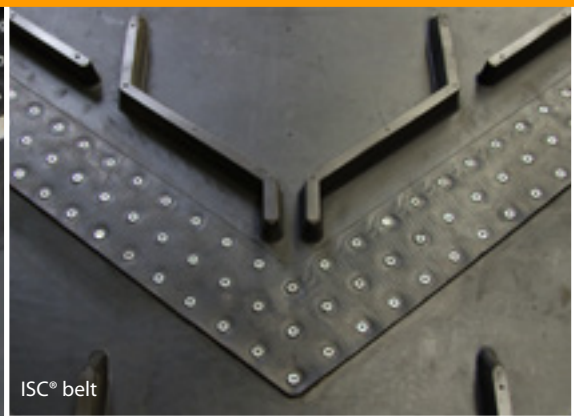
# MLT

Minel Lacing Technology

MLT – it's also metallic fasteners, flexible splices, tools,  
endless and spliceless technical belts



Super-Screw® The Original



ISC® belt



MS®



FIX'N GO®

Innovative products,  
easy to install !



Self-Lock®



Clip'N Lock®



Technical belt  
**Endless spliceless belts**



## Innovation for 70 years.

MLT, it's solutions for heavy and light duty belts, tools, technical belts, etc.



Call Toll Free: 1-866-711-4673

[WebSales@GoodyearRubberProducts.com](mailto:WebSales@GoodyearRubberProducts.com)

We Ship World Wide